

Prakata : Bab 4 Teknik Dabel Maru

Kepada pembeli ebook ini saya ucapkan ribuan terima kasih.

Kepada mereka yang Download ebook ini secara secara tidak sah atau tidak mendapat kebenaran dari saya atau mendownload ebook ini secara percuma dari mana mana laman web dan telegram atau Whatsapp

.....hanya 1 permintaan saya.....

Ilmu ini milik ALLAH ...saya hanya penyampai apa yang saya tahu...jika anda donwload secara tidak sah ianya tidak menjadi masalah Cuma 1 jer permintaan saya

“ Jika anda Profit menggunakan teknik ini...tolonglah derma kepada mana mana tabung kebajikan sebanyak RM100..” mereka lebih memerlukan wang anda...itupun kalau SETELAH anda profit...kalau belum profit..saya minta maaf kerana yang baik datang dari ALLAH yang buruk datang dari saya...

NOTA : Ebook ini didatangkan dengan VIDEO Tutorial dan VIDEO penerangan.

Video tersebut boleh didapati di laman Facebook CPM 10 (closed Group) hanya terbuka kepada pembeli sebenar sahaja...

Sekian terima kasih....segalanya datang dari ALLAH...dan kepada ALLAH kita kembali

Yang Benar

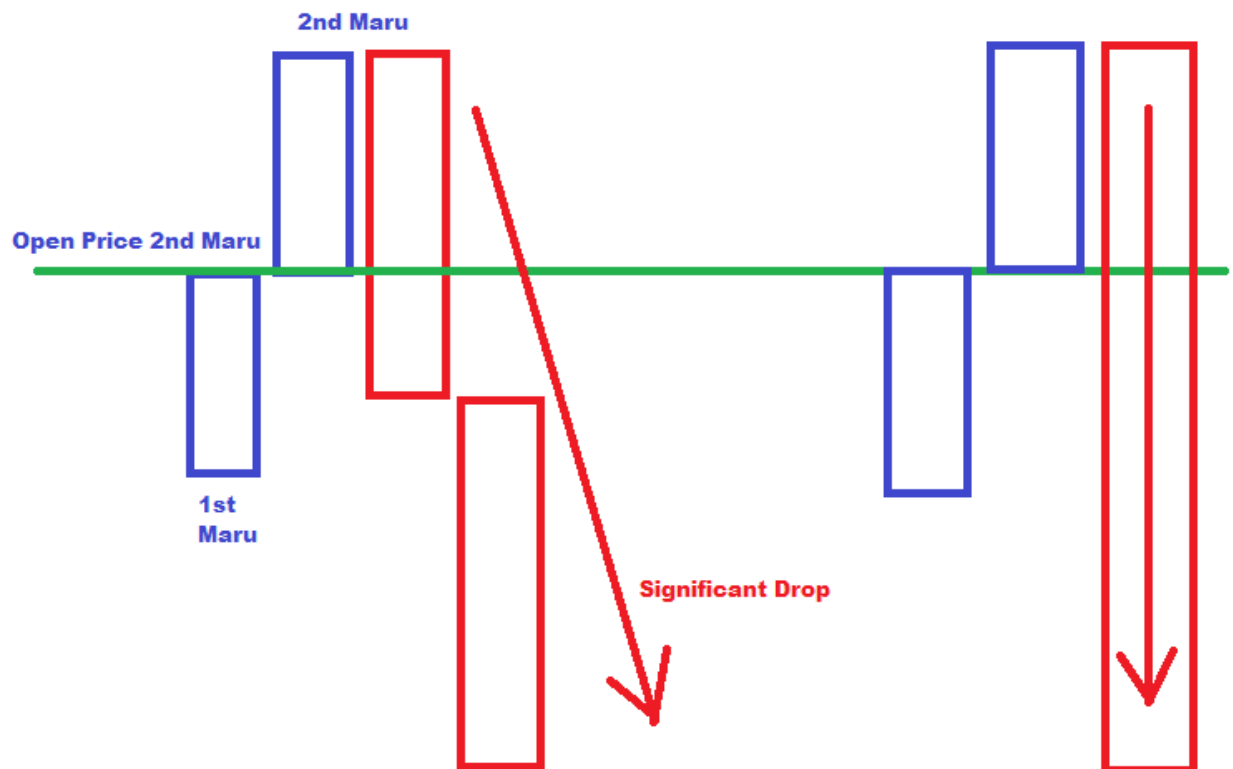
MansorSapari aka ShadowgunFX

This Page is Intentionally Blank

Bab 4 Entry 1 Sharp Entry Teknik Dabel Maru FTR Combo

4.1 Dabel Maru

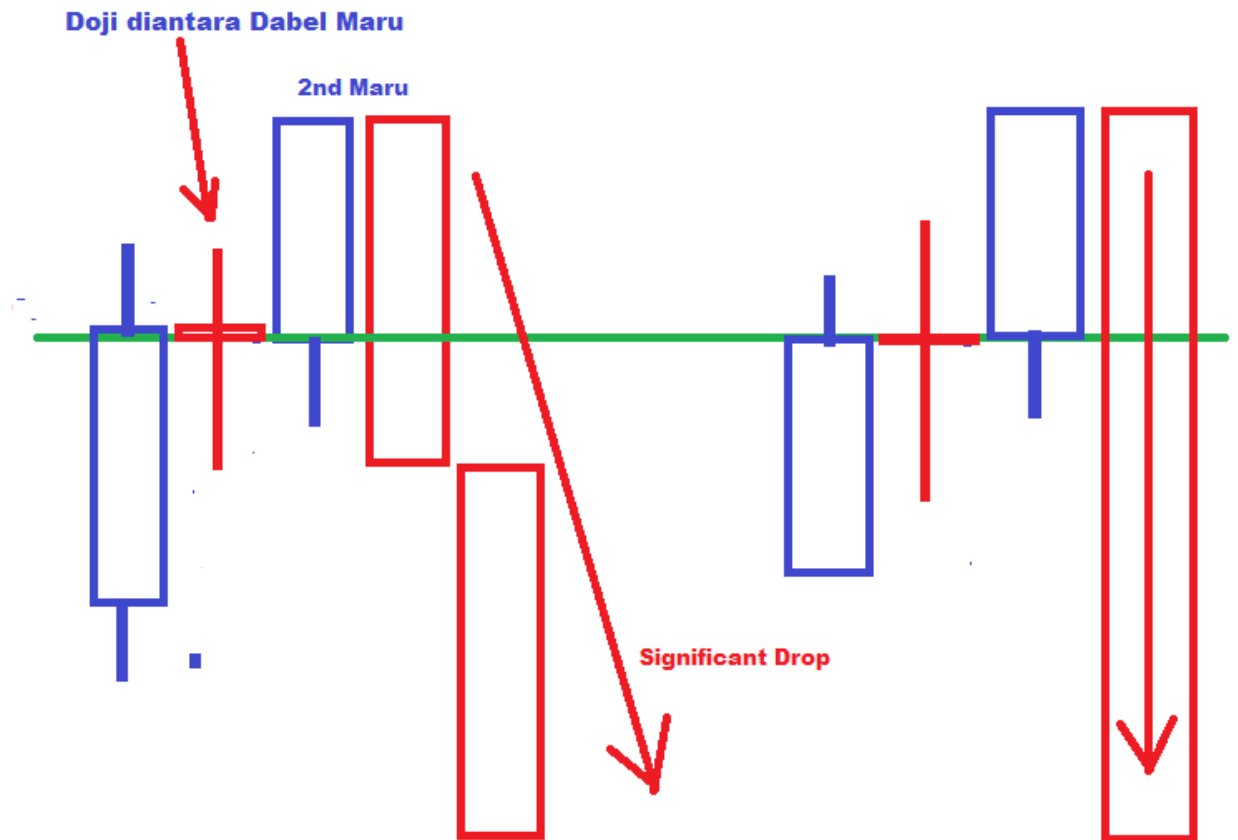
4.1.1 Clean Dabel Maru.



Ciri Ciri Valid Dabel Maru

1. Paling penting Significant Drop..Tidak ada Significant Drop maka ianya ialah Risiko
2. Ada Dabel Maru disebelah kiri Significant Drop
3. Jadikan OPEN price 2nd Maru sebagai Supply zone
4. Kita akan Entry Sell apabila price datang semula ke Open Price 2nd Maru (sell at Supply)
5. Stop Loss diatas Highest Shadow
6. TP terpulung kepada selera 1: 3 minimum 1:20 Maximum atau 40-50 pip minimum

4.1.2 Doji diantara Dabel Maru



Melalui Pengalaman Saya Teknik Dabel Maru akan memberi entry yang sangat Sharp

Dimana Entry seperti ini akan memberi Nisbah Risk : Reward yang sangat besar

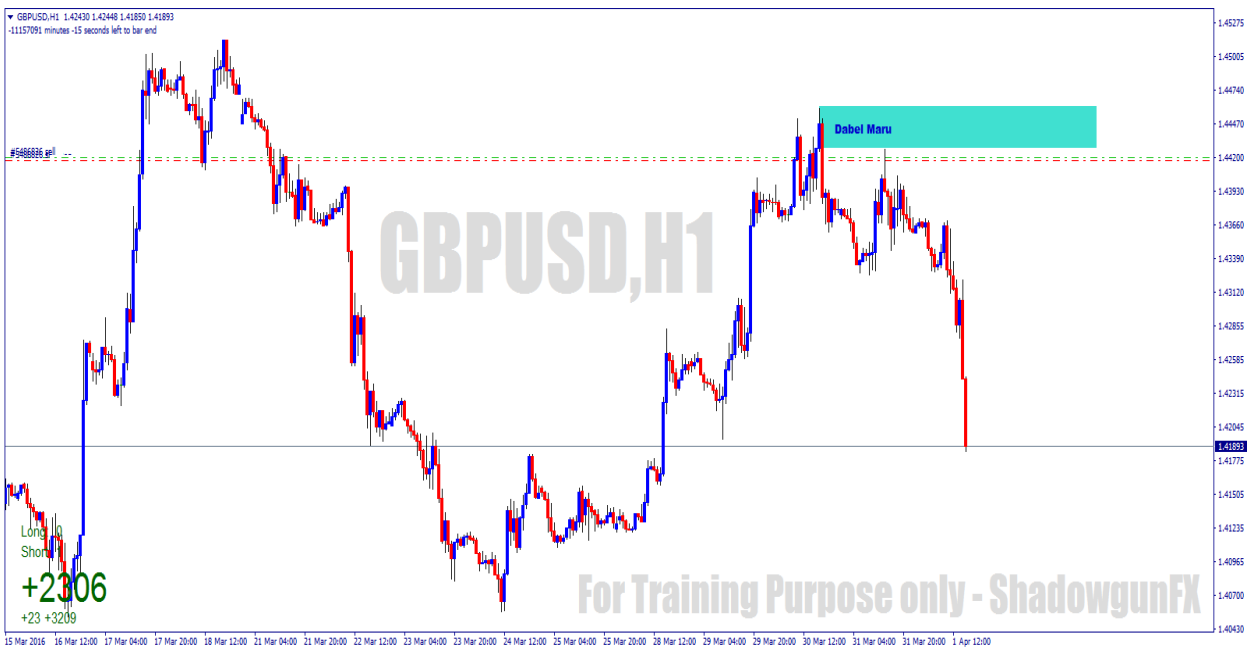
Risk adalah Kecil dan Reward sangat besar.

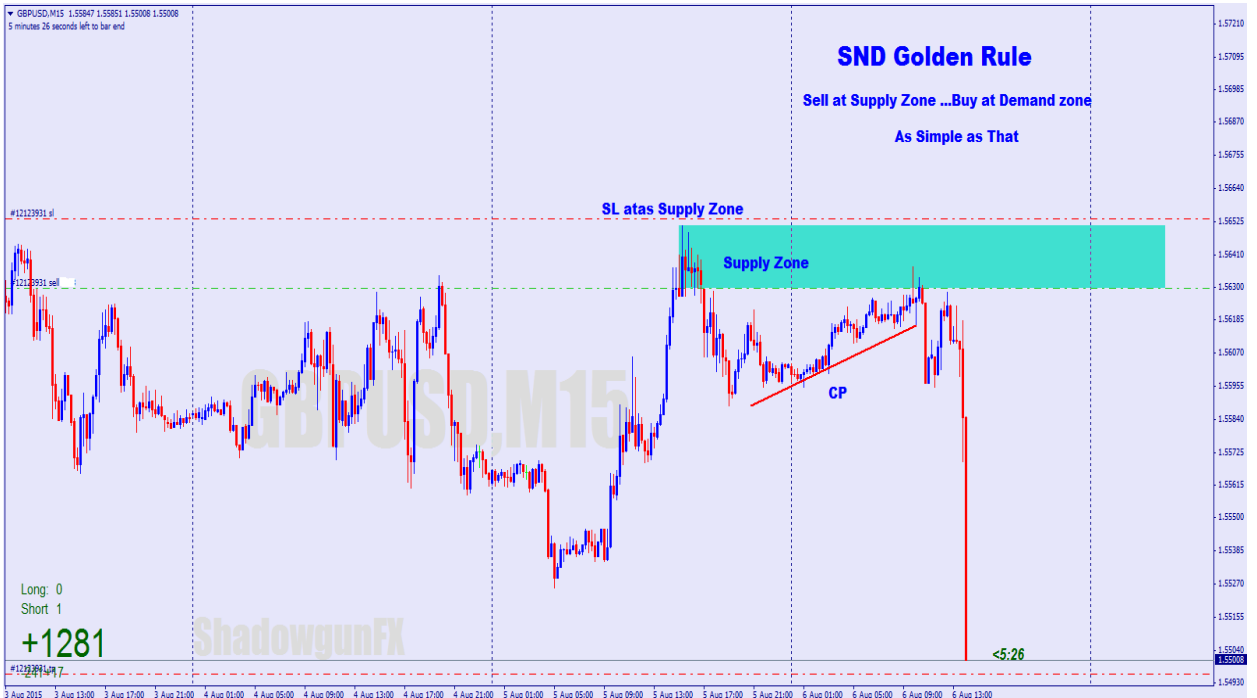
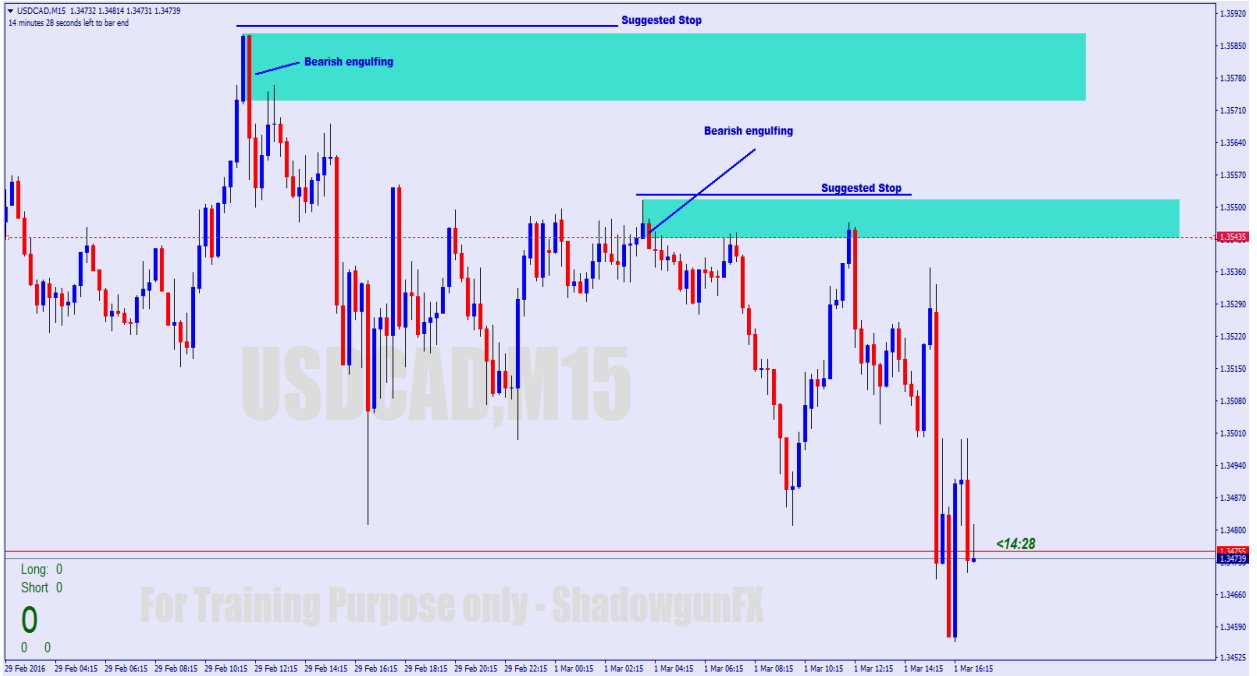
Paling jauh pengalaman saya Risk Reward 1: 20

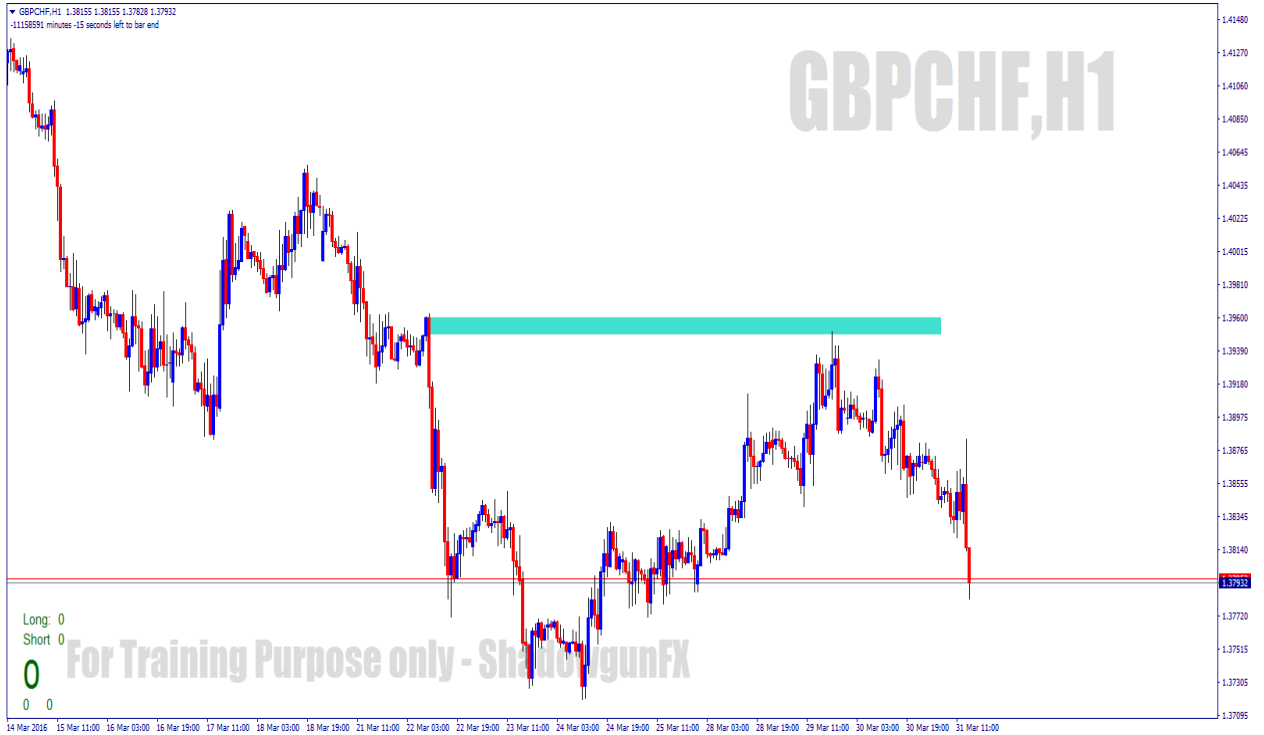
Dan paling lazim 1:5

Contoh2 Enry Dabel Maru

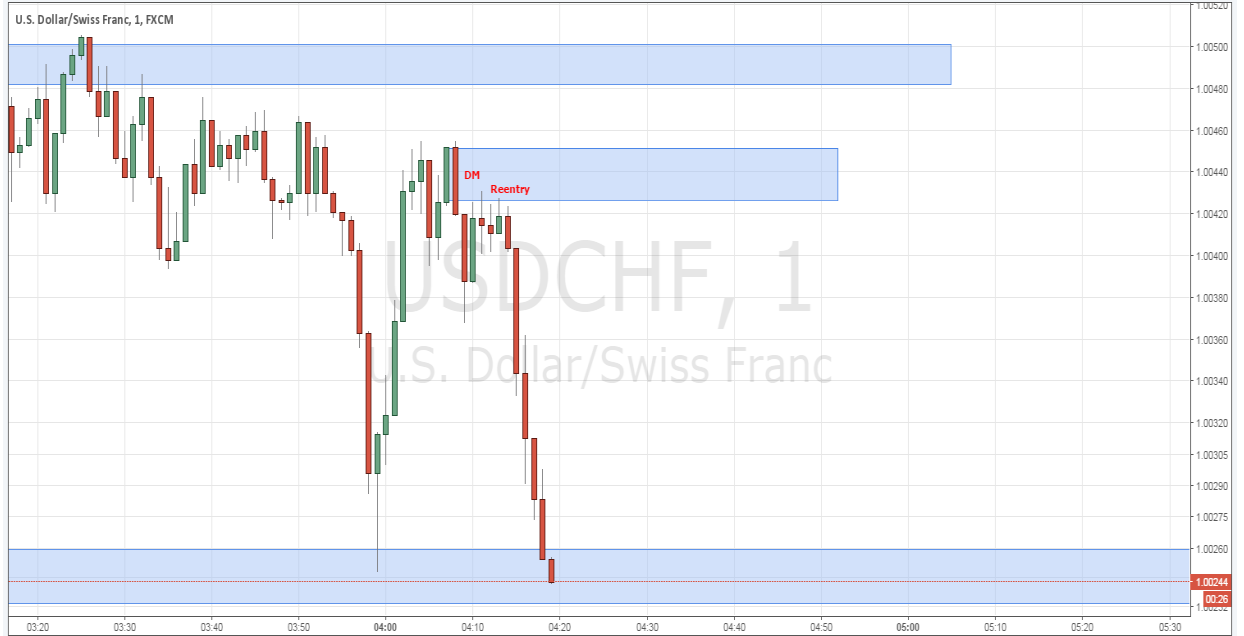






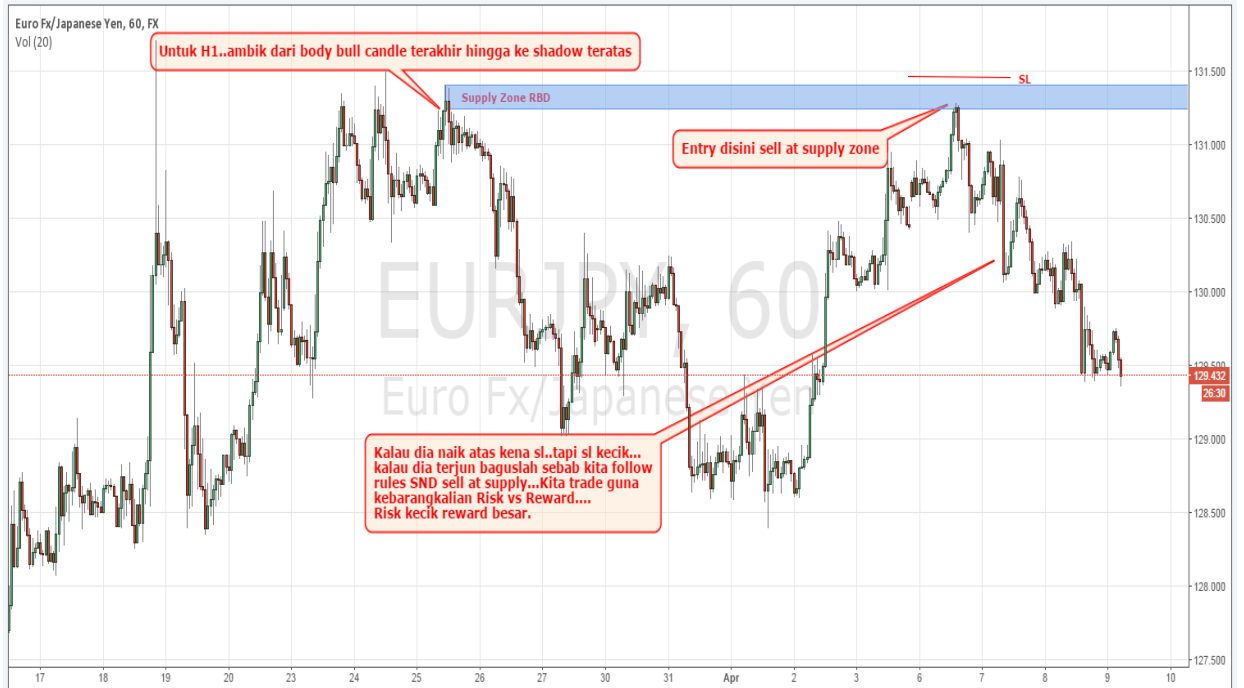


mohd.m.sapari published on TradingView.com, January 15, 2016 04:19 EST
 FX:USDCHF, 1 1.00244 ▼ -0.00211 (-0.21%) O:1.00255 H:1.00256 L:1.00243 C:1.00244



mohd.m.sapari published on TradingView.com, April 20, 2016 20:10 EST
 FX:EURUSD, 30 1.13014 ▲ +0.00060 (+0.05%) O:1.12987 H:1.13018 L:1.12981 C:1.13014





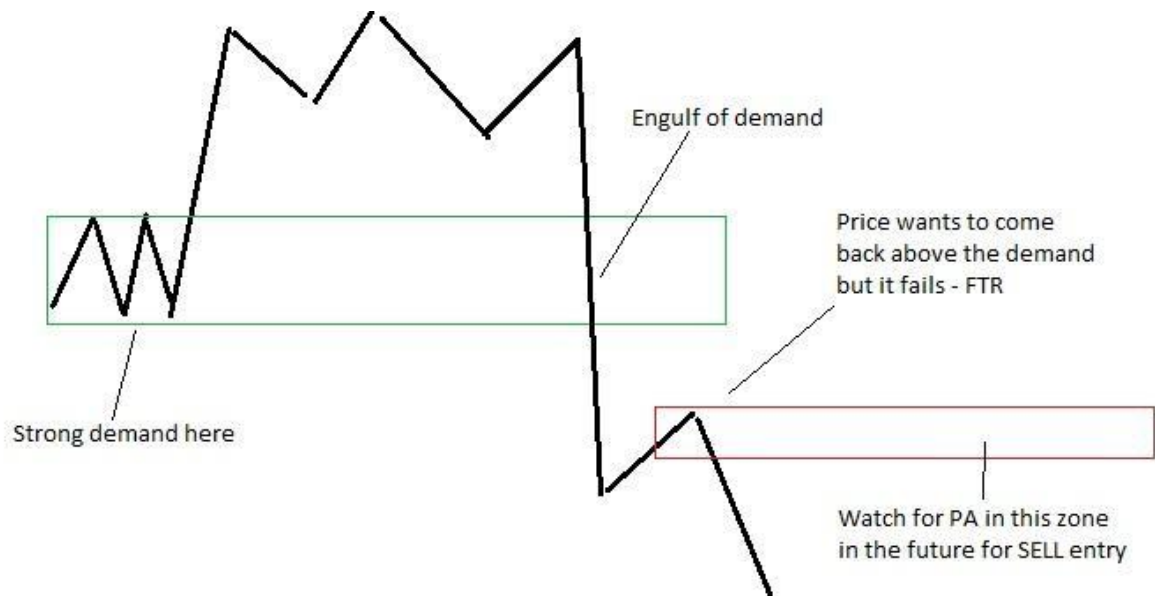
Published on TradingView.com, April 09, 2015
FX:GBPUSD 1.48710 ▲+0.00057 (+0.04%) O:1.48710 H:1.48755 L:1.48707 C:1.48710



Published on TradingView.com, May 19, 2015
FX:USDCHF 0.93155 ▲+0.00547 (+0.59%) O:0.93167 H:0.93221 L:0.93016 C:0.93155



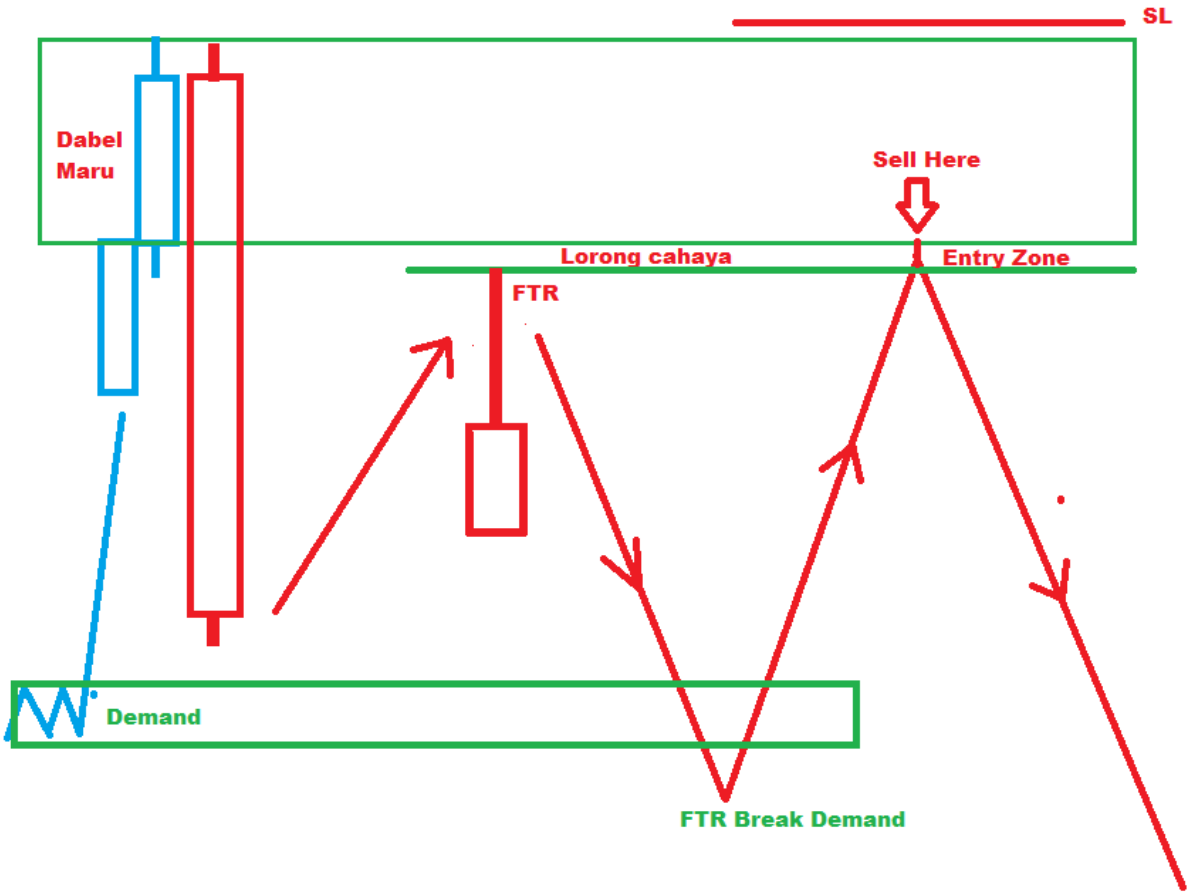
4.2 FTR Fail To RETURN



The Concept apabila Supply mula menguasai Pasaran.

Apabila Demand yang penting di Break maka ia memberi Signal awal bahawa Big Trader ingin Sell The Market.

Tetapi kita Folllow SOP(Standard Operating Procedure atau pun Confirmation untuk melakukan Entry

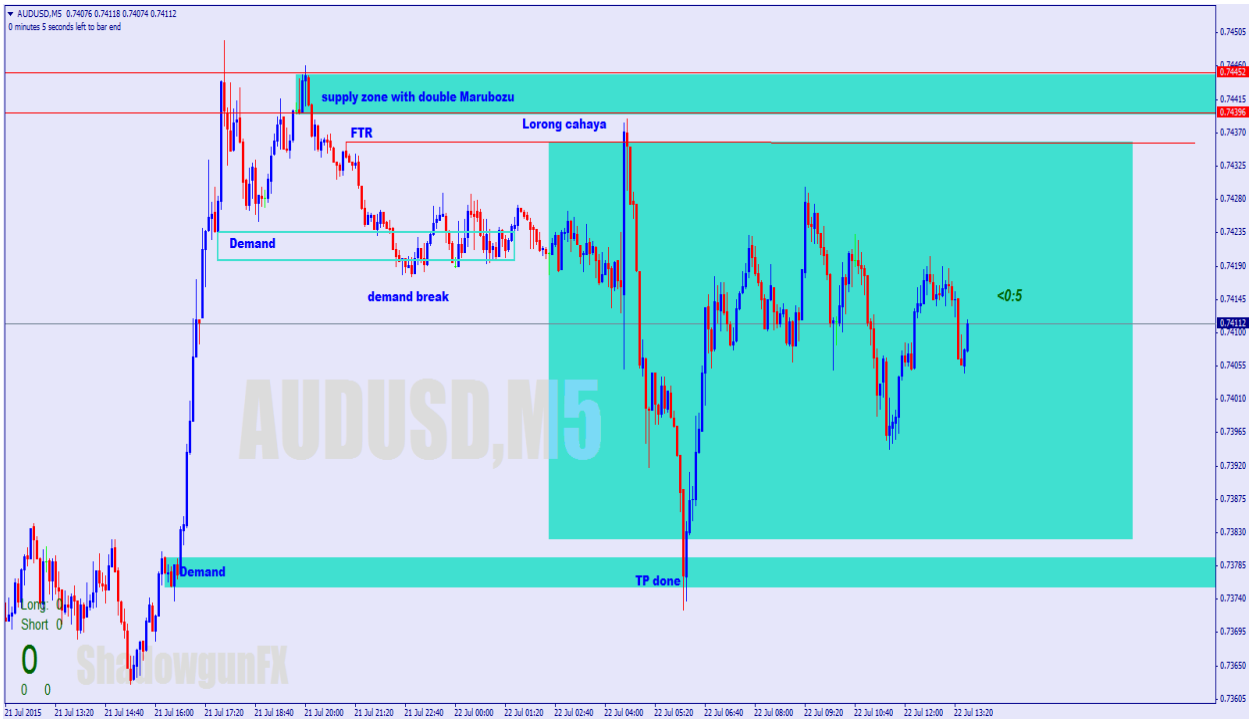


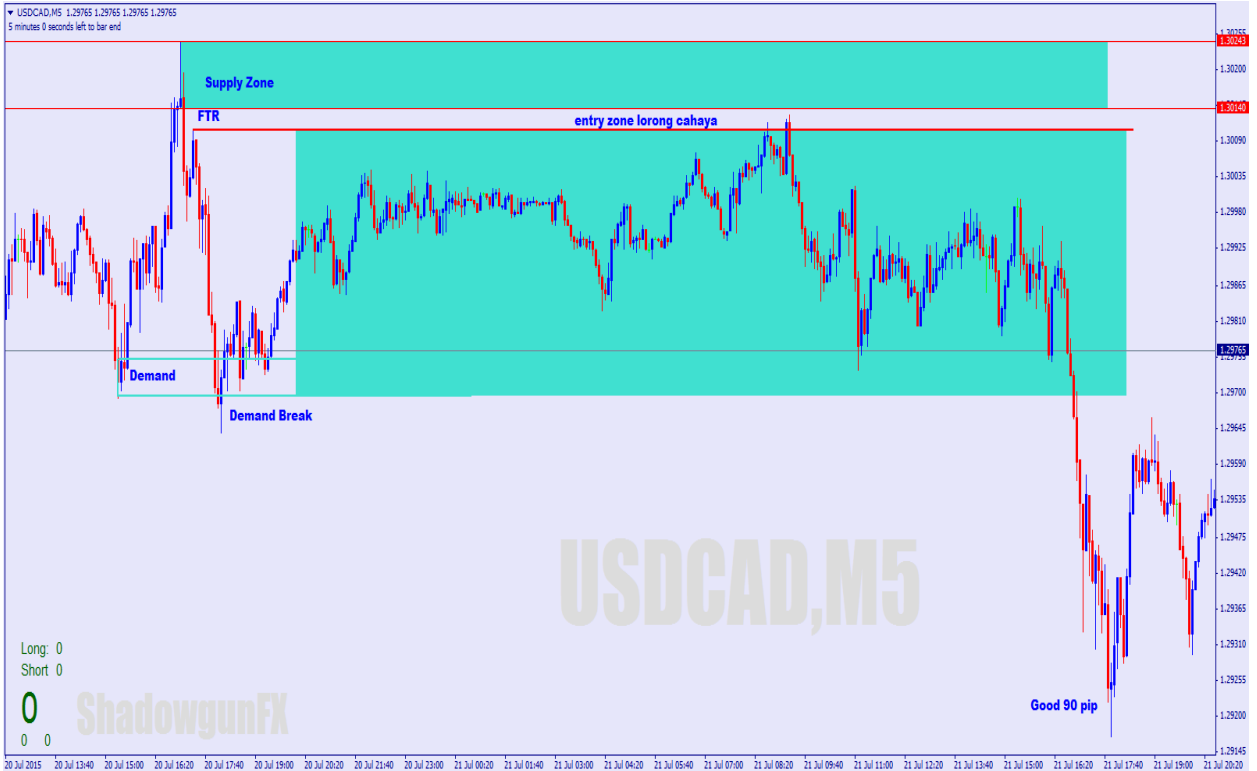
SOP FTR.

1

2

Kronologi apa yang berlaku disebalik FTR



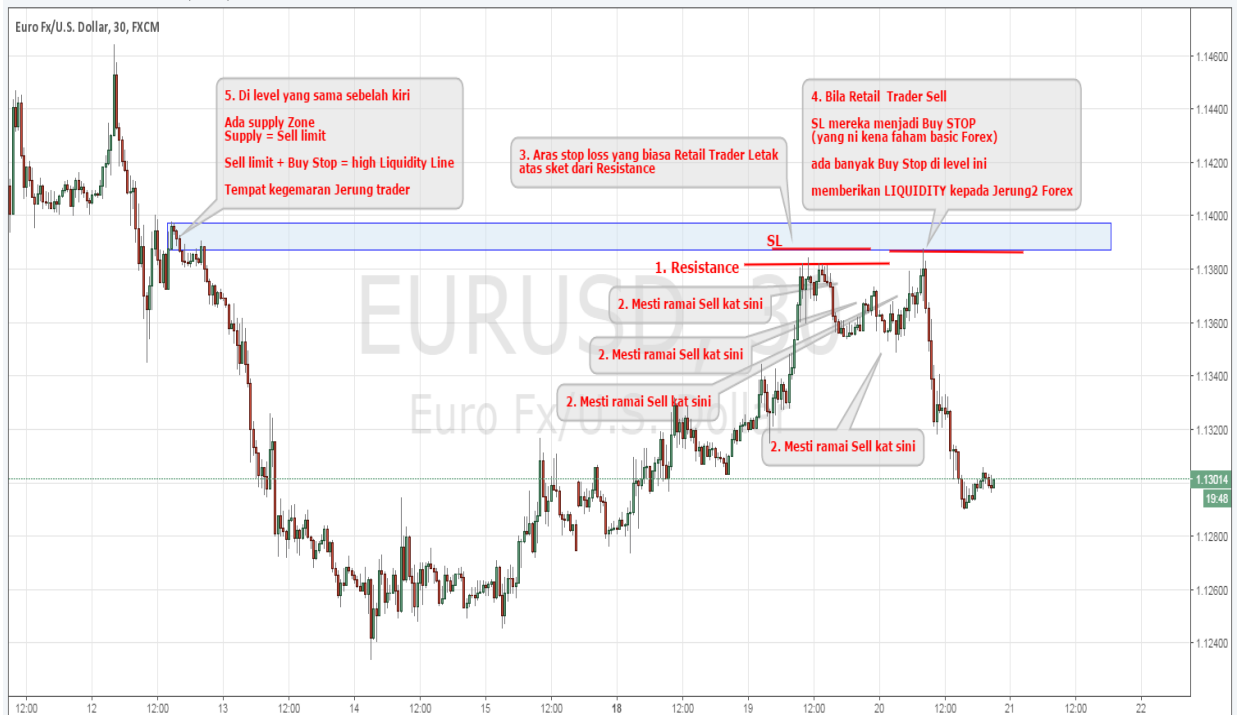


Published on TradingView.com, May 19, 2015
FX:EURJPY 134.471 ▼ -1.268 (-0.93%) O:134.460 H:134.482 L:134.456 C:134.471



mohd.m.sapari published on TradingView.com, January 15, 2016 03:00 EST
FX:USDCHF, 5 1.00482 ▲ +0.00027 (+0.03%) O:1.00514 H:1.00521 L:1.00478 C:1.00482





mohd.m.sapari published on TradingView.com, April 07, 2016 03:19 EST
FX:AUDUSD, 15 0.75824 ▼ -0.00160 (-0.21%) O:0.75814 H:0.75836 L:0.75753 C:0.75824

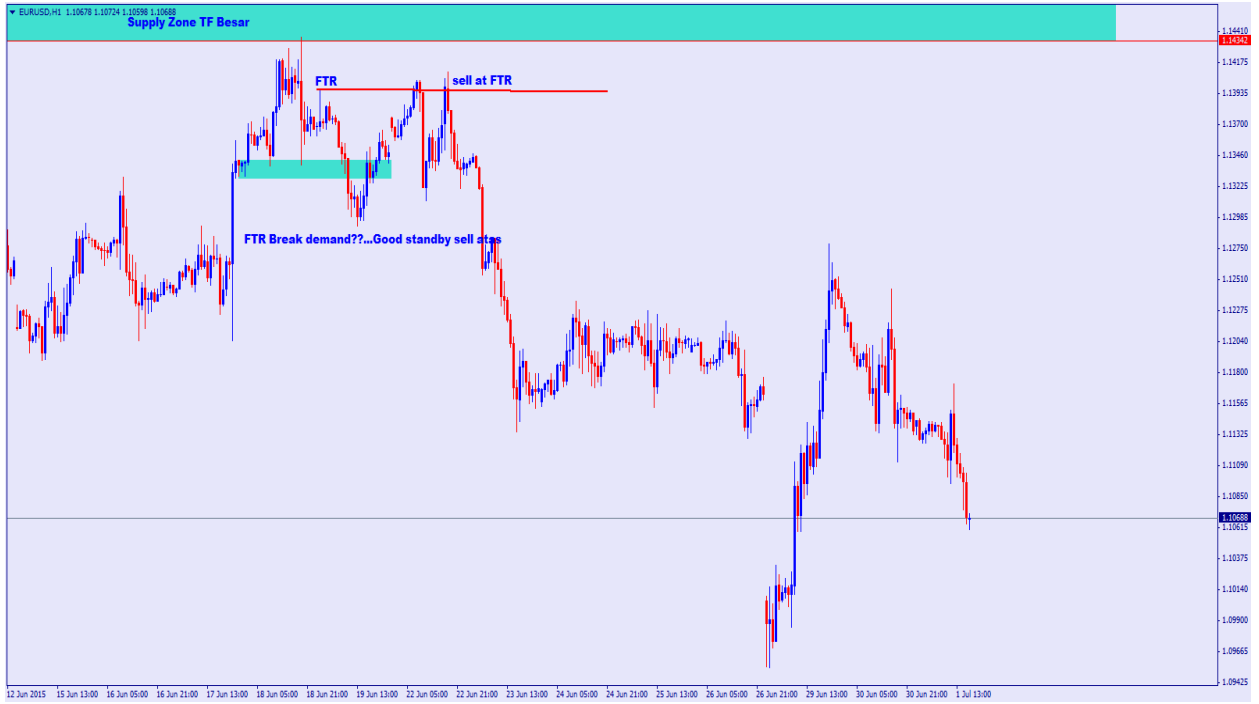
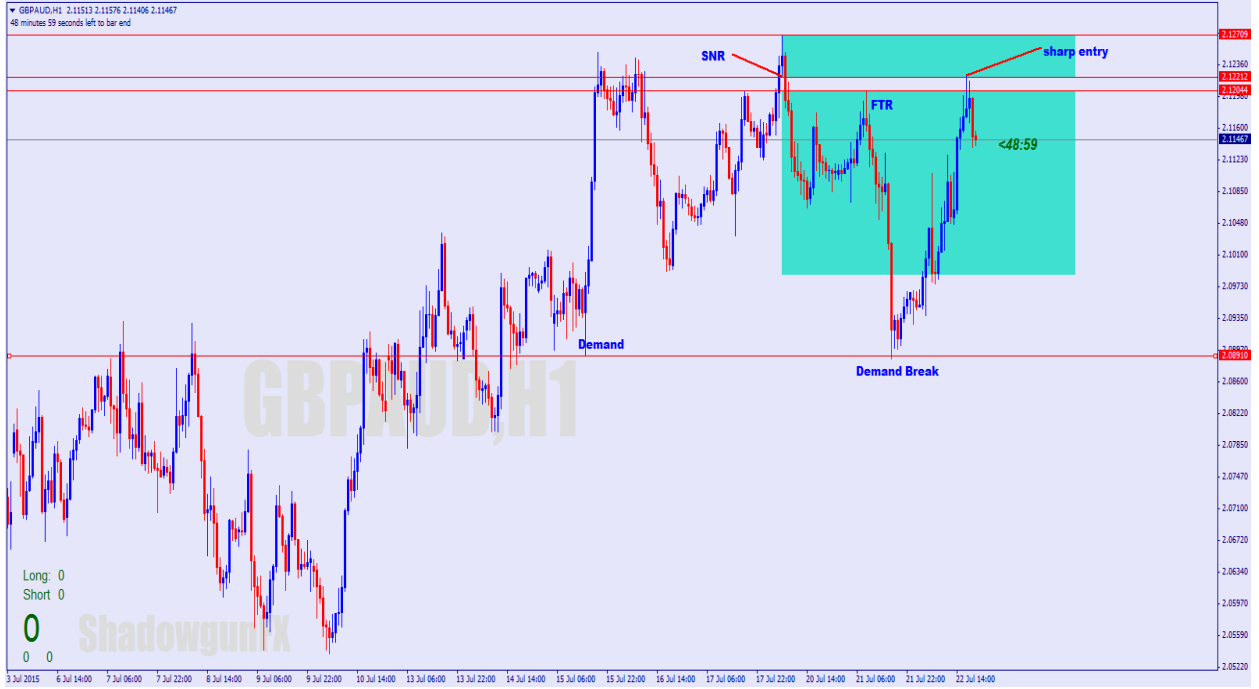


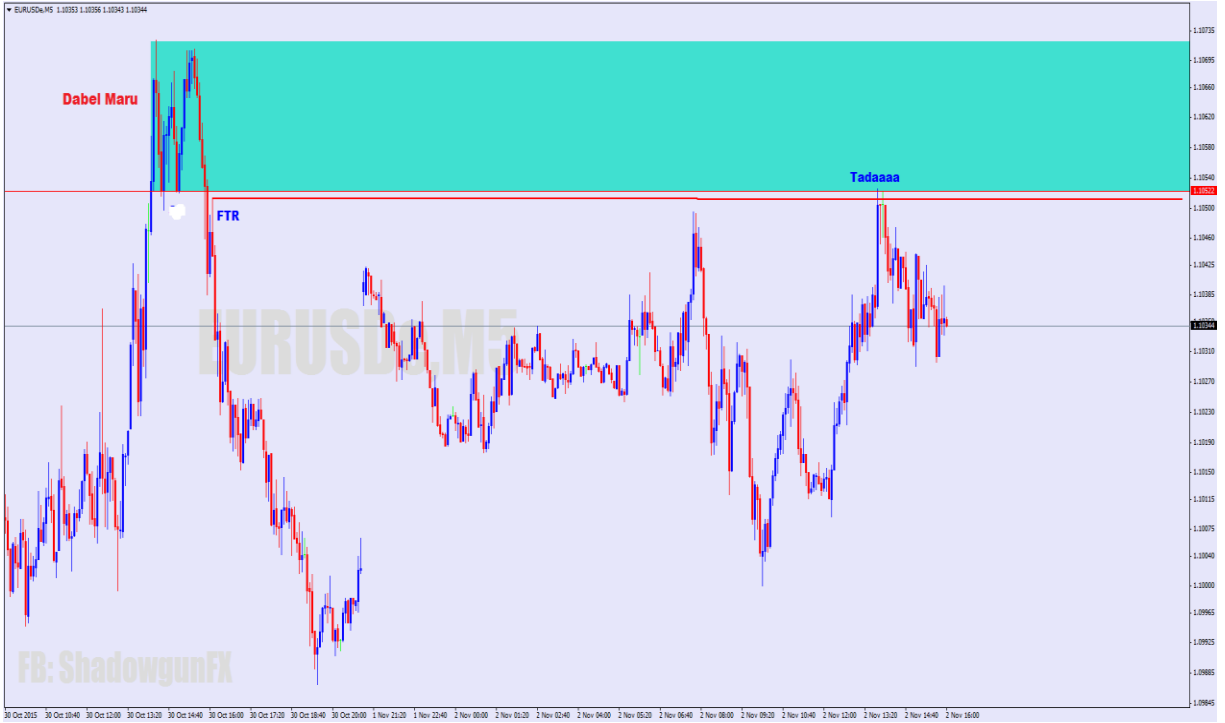
Published on TradingView.com, May 13, 2015
FX:XAUUSD 1213.86 ▼ -1.69 (-0.14%) O:1214.03 H:1214.96 L:1212.63 C:1213.86

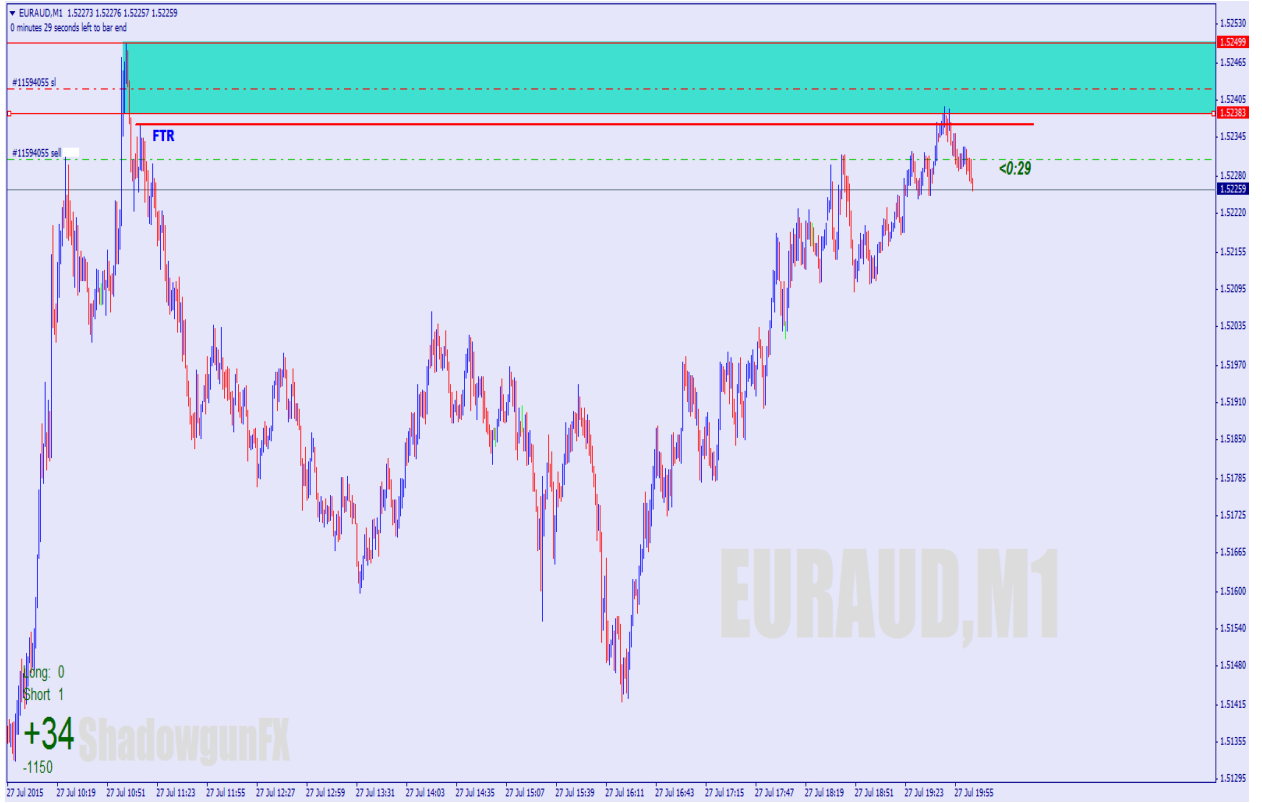








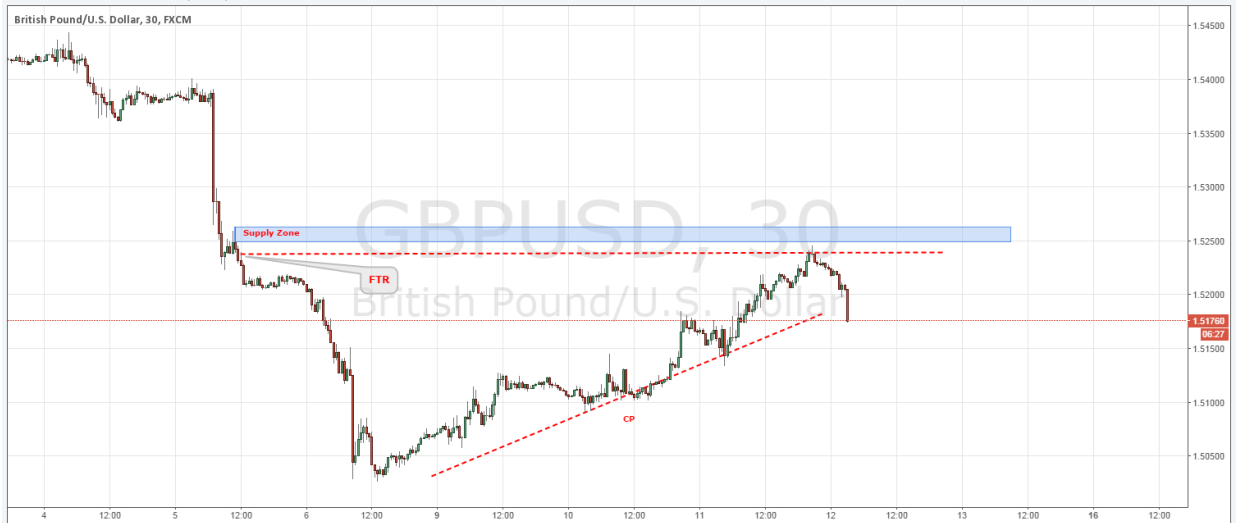


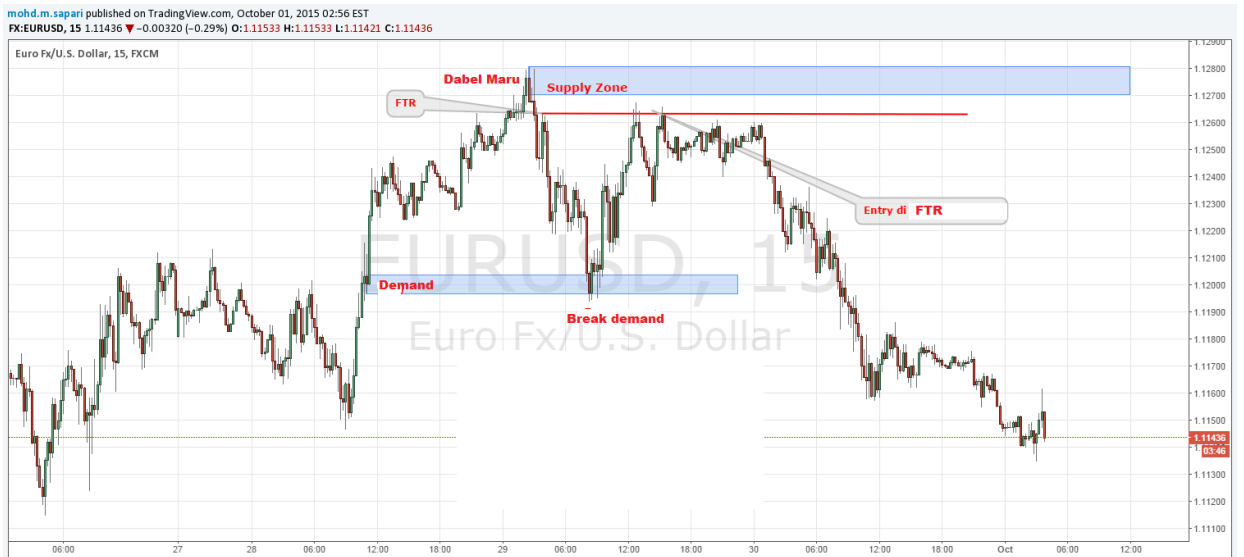
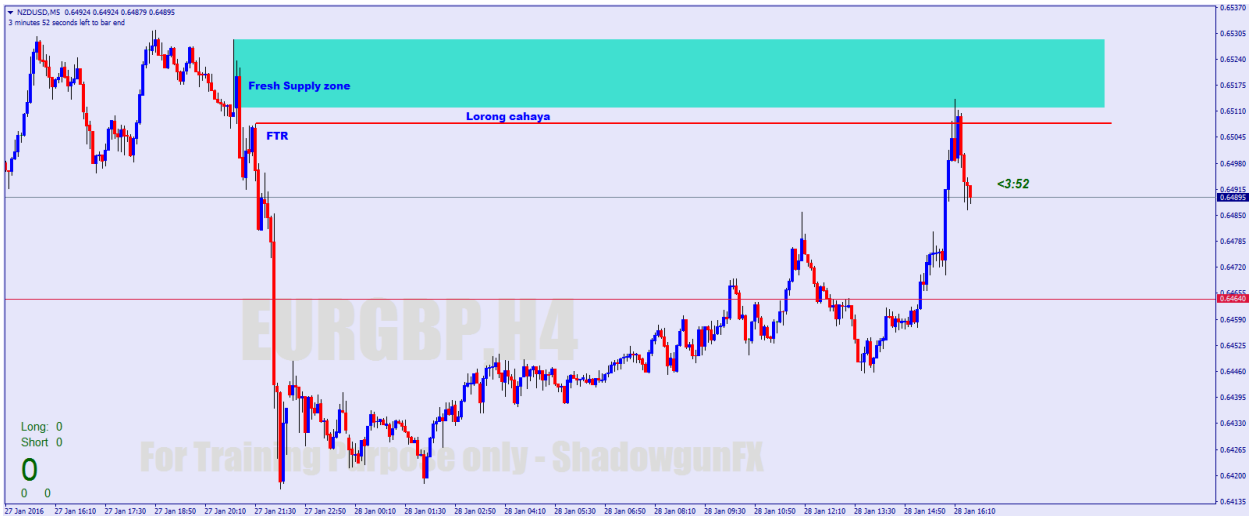


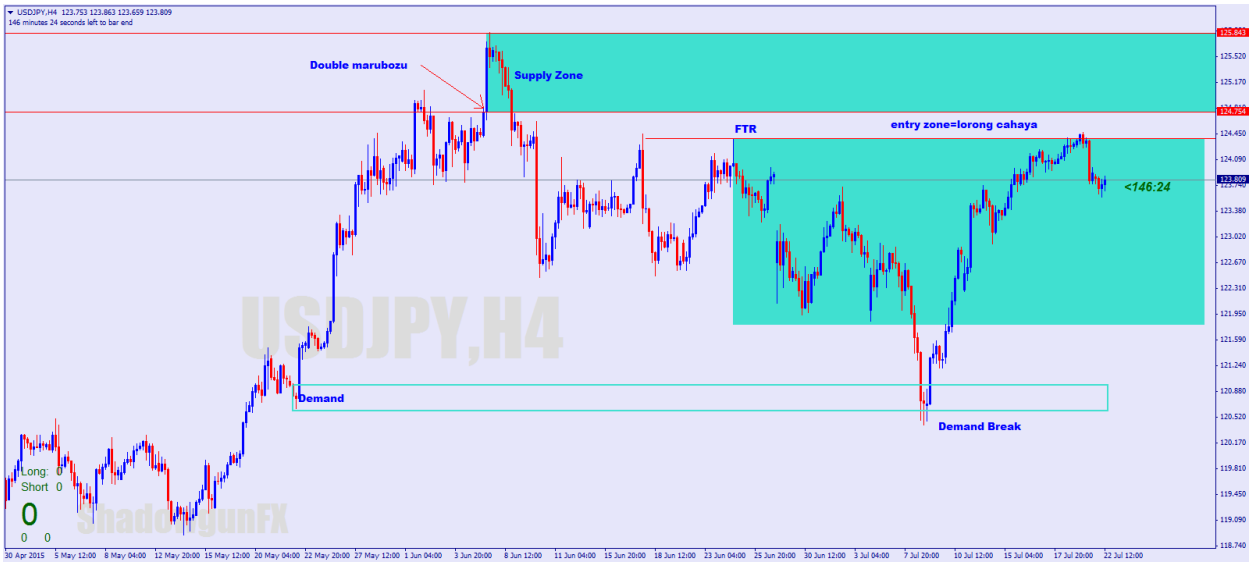
Published on TradingView.com, February 17, 2015
 FX:XAUUSD 1207.64 ▼ -1.61 (-0.13%) O:1207.57 H:1207.66 L:1207.53 C:1207.64

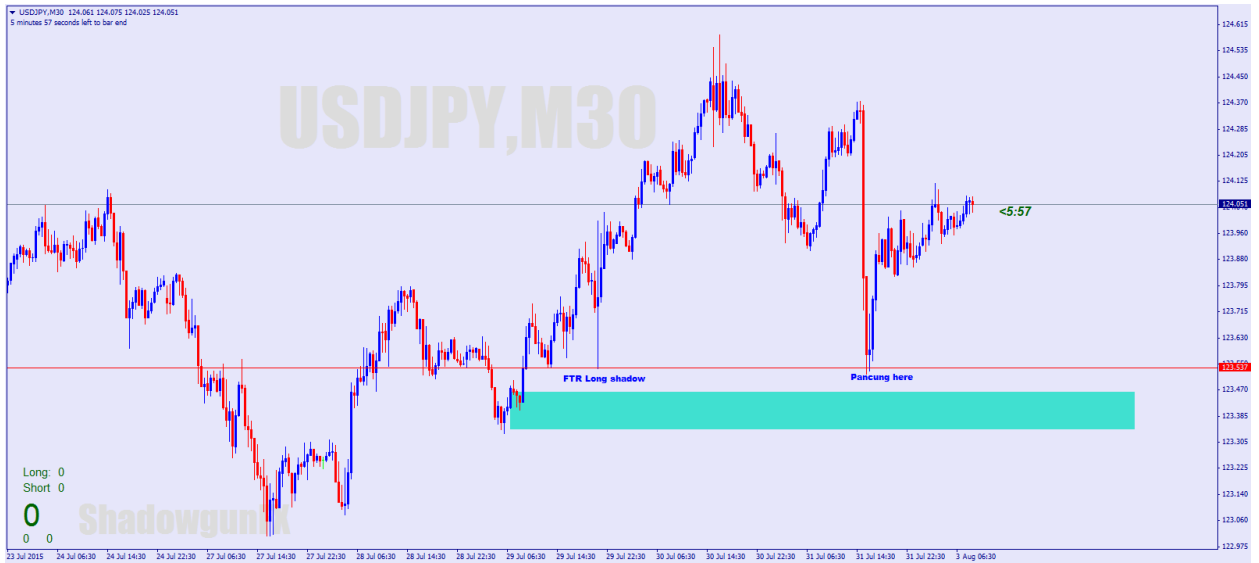


mohd.m.sapari published on TradingView.com, November 12, 2015 03:23 EST
 FX:GBPUSD, 30 1.51760 ▼ -0.00312 (-0.21%) O:1.52053 H:1.52056 L:1.51741 C:1.51760









***Assignment 20 ss

